

# Centauri Application Note 1

## How to realise an ISDN Backup for a Faulty IP Connection

### 1. Conditionals

- Centauri with system software 1.1.0.44 or later
- PC with:
  - min. Pentium 166 MHz
  - RAM 32 MB
  - operational system Windows '95, '98, ME, NT or 2000
  - free serial port (remote control by RS232) or Ethernet card (remote control by IP)
- Null modem cable (included in Centauri) if RS232 control is used or all necessary LAN cabling between Centauri and PC
- Centauri remote control with version 1.1.0.24 or later

**Note:**

You can download the current the Centauri system software and the latest remote software from Mayah homepage [www.mayah.com](http://www.mayah.com) at section download.

### 2. Short Introduction to Centauri Event Action Programming

Please consider that this is not a detailed description of how Centauri event action programming is working. It just wants to give you a little impression of its possibilities. Generally Centauri event action programming just has the intention to combine events like

- Alarm on or off
- Connect on or off
- framed on or off
- overload on or off
- TTL input high or low

with actions. An action can be defined as a set of Centauri commands

### 3. Description of ISDN Backup for a Faulty IP Connection

After an IP connection loses framing, an ISDN connection should be established automatically for backup.

#### 4. How to input all the necessary Commands to the Centauri

You can type in all the necessary commands with help of the Centauri remote control software. Just step to remote item <Expert/Direct Command>.

Maybe you get asked for a super user password. This super user password is determined by the first use of Centauri remote on your PC. If the super user gets lost you can recover it very easily.

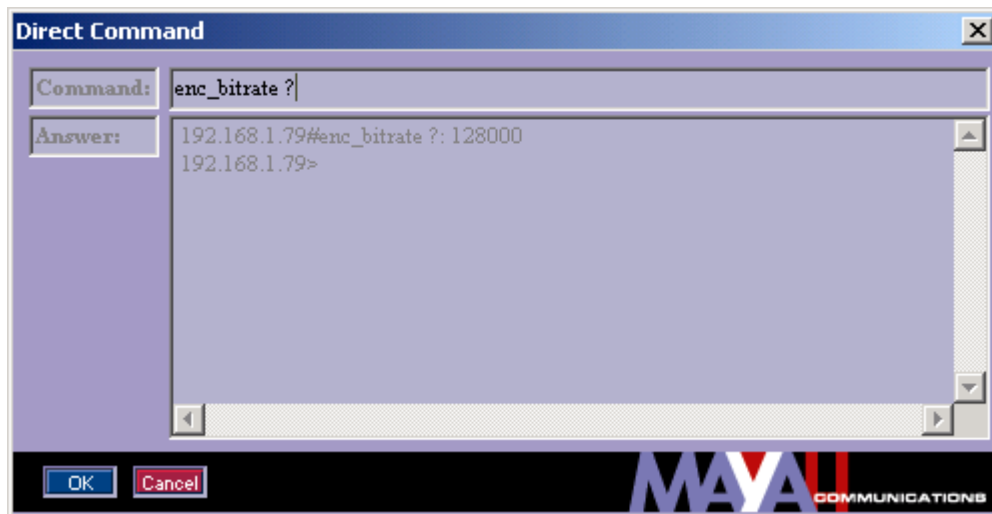
It is saved in the registry in:

HKEY\_CURRENT\_USER\Software\Mayah Communications\Centauri Remote\SuperUserPassword.

How to use the direct command dialog:

Just type in the Centauri command in the command edit field and confirm by pressing the 'OK' button.

You'll get the answer in the answer memo box.



## 5. Necessary Commands

### **Create the following phonebook entry on the first Centauri**

To create a phonebook entry via remote control at the first Centauri, first press the 'PHONEBOOK' button and then the 'NEW' button. After this enter the following phonebook entry:

```
Backup_ip
<number of encoder profile>
<number of decoder profile>
isdn
phone number 1
phone number 2
```

..  
for example:



Finally confirm the new phonebook entry by pressing the OK button.

### **Define the action 'isdnback' at first Centauri**

Direct command:

```
'action_create isdnback com_disconnect 0;phone_execentry <number of above created phonebook entry>'
```

### **Define the action 'isdnback' at second Centauri**

Direct command:

```
'action_create isdnback com_interface isdn'
```

### **Event programming at first and second Centauri**

Direct command: 'event\_set framed\_off 1 isdnback connect'

### **Save the events at first and second Centauri**

Direct command: 'event\_save'